



PASHUPATI
GROWTH WITH VISION

Wearing Faith

About us

Pashupati group of companies have carved an admirable reputation in Textiles with diverse verticals enabling the concept of FARM TO FABRIC. Since its inception in 1997, the business has gradually moved into forward integration, which includes Ginning, Oil mill, Spinning, TFO, and Weaving along with Sizing & Warping.

Pashupati Cotspin Ltd, the flagship company of the group is LISTED ON NSE. The group's state-of-the-art warehouses are spread across 3,50,000sq.ft. and are pre-equipped to cater to manufacturing, assembly, storage, and logistical requirements.

The group has invested in green initiative projects of Solar and Wind Energy totalling 17.6 MW and generating 36 Millions units of Green energy. The Group is also in the Hospitality sector with hotel, restaurants, and banquets. In the year 2020, the group diversified into the pharmaceutical sector with the incorporation of Uniza.

Mfg. & Exporters of Sustainable Cotton Bales, Yarns, Greige & Finish Fabrics to over 27 Countries



FARMING



GINNING



SPINNING



WEAVING



PHARMA



GREEN ENERGY

TURNOVER: 150 MILLION+ | WORKFORCE: 2000+ | MANUFACTURING FACILITIES: 5

Farm to Fabric



At Pashupati, we believe in creating a responsible supply chain mechanism. We aim to encompass our motto of FARM to FABRIC in the principles of sustainability. The group strives to grow and process the best quality of cotton by adopting best practices and adhering to necessary standards so that cotton is grown in a sustainable manner.

Environmentally sustainable practices such as soil conservation, sustainable natural resource management and biodiversity protection, are essential for responsible development.

We believe sustainability is not only limited to environment but is extended to creation of value in terms of food security, rural employment, and improvement in quality of life. Our aim is to provide our customers with the best quality cotton cloth at an economic range and to ensure that we create the best range of services by taking cotton from “Farm to Fabric”



SUSTAINABLE
COTTON



SUSTAINABLE
YARNS



SUSTAINABLE
FABRICS



| 5,000+ FARMERS | 46+ VILLAGES |

| 25,000+ ACRES LAND FOR SUSTAINABLE FIBER PRODUCTION | 11,000+ MT RAW COTTON |



Vision

Staying rooted to our values and strive to be preferred supplier in Sustainable and Value-added apparels supply chain by focusing on growth with sustainability as core strategy.

Mission

To be an Altruistically Committed Enterprise for our stakeholders and follow the path of integrity, excellence, and customer centricity in business.

Values



Founder & CMD, Pashupati Group

Saurin Parikh

Esteemed Promoters

Mitesh Parikh | Bhavesh Patel | Ashish Trivedi | Dakshesh Patel

Mukesh Patel | Urdip Brahmbhatt | Haresh Shah | Tushar Trivedi

Chirag Desai | Ashish Patel | Milind Parikh

OUR COMPANIES

PASHUPATI
COTSPIN LIMITED

PASHUPATI
TEXSPIN EXPORT LLP

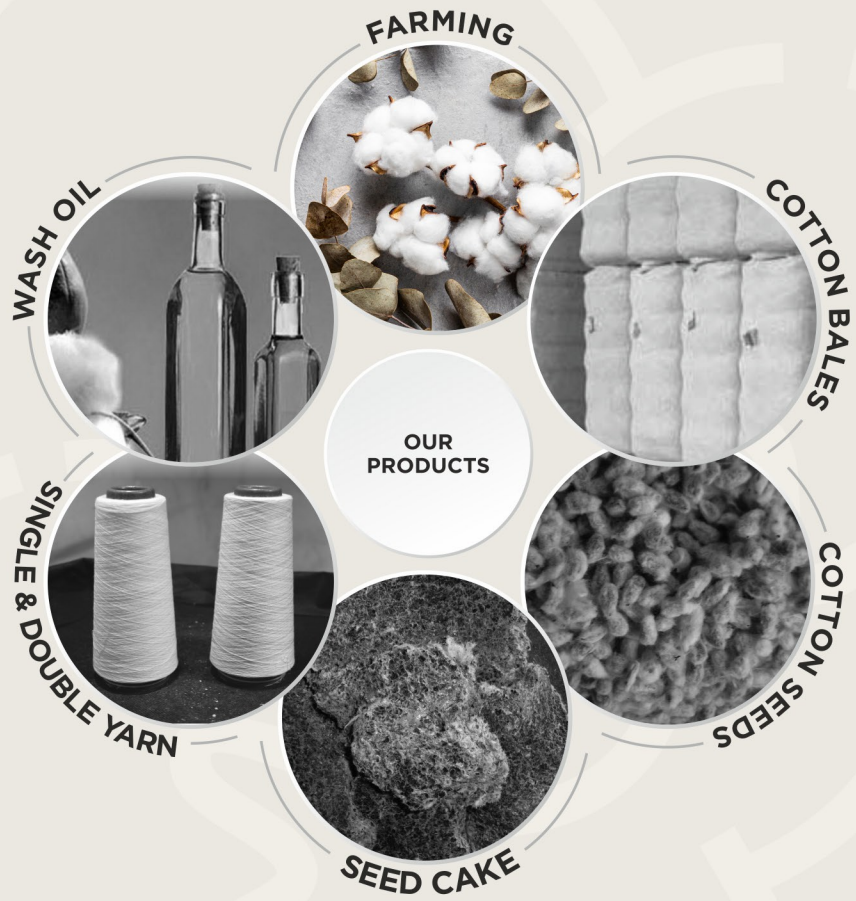
Uniza
Ensuring Global Wellbeing

OUR PROJECTS

PASHUPATI
WAREHOUSE

WELCOME श्री Hotel
Rooms, Restaurant, Banquet & Conference

PASHUPATI
GREEN ENERGY



| GINNING UNIT

DR Gin. 112 nos.
2.5 lakh Cotton Bales / Annum

| SPINNING UNIT

Ring Spindles 37000 nos.
10,950 MT / Annum - Cotton yarn
Ne 20s to 40s in Single Yarn
Compact - Combed - Carded - Lycra -
Elli Twist - Weaving / Knitting

| TFO UNIT

TFO M/c 10 nos.
2482 MT / Annum
Ne 2/20 to 2/40 Double Yarn

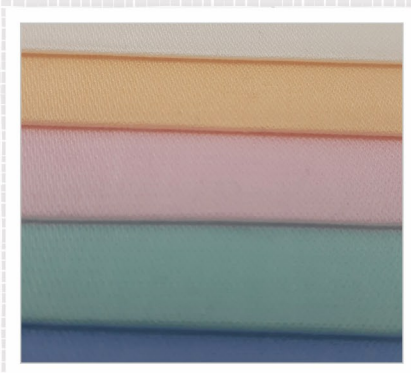
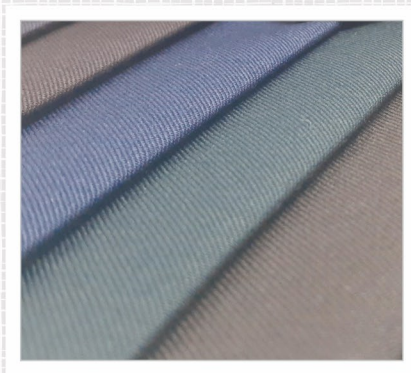
| OIL MILL

Expellers - 24 nos.
27000 MT Cotton Seed Cake / Annum
3000 MT Wash Oil / Annum

70% OF POWER
FROM GREEN ENERGY

| CERTIFICATIONS & BRANDS





GREIGE AND FINISH FABRICS

| WEAVING UNIT

WARPING

Direct warping and Sectional warping

SIZING

2100 MT / Annum -Yarn Beam

LOOMS

E-shed loom-48 nos. 10 Million Mtr. / Annum - Greige

All type of dobby weave machine up to 16 shaft-82”rs with 4 colour insertion (with name writer)

| YARN BEAM

We have a fully equipped backward integration comprising of ginning, spinning and weaving, enabling us to provide YARN BEAMS of consistent quality.

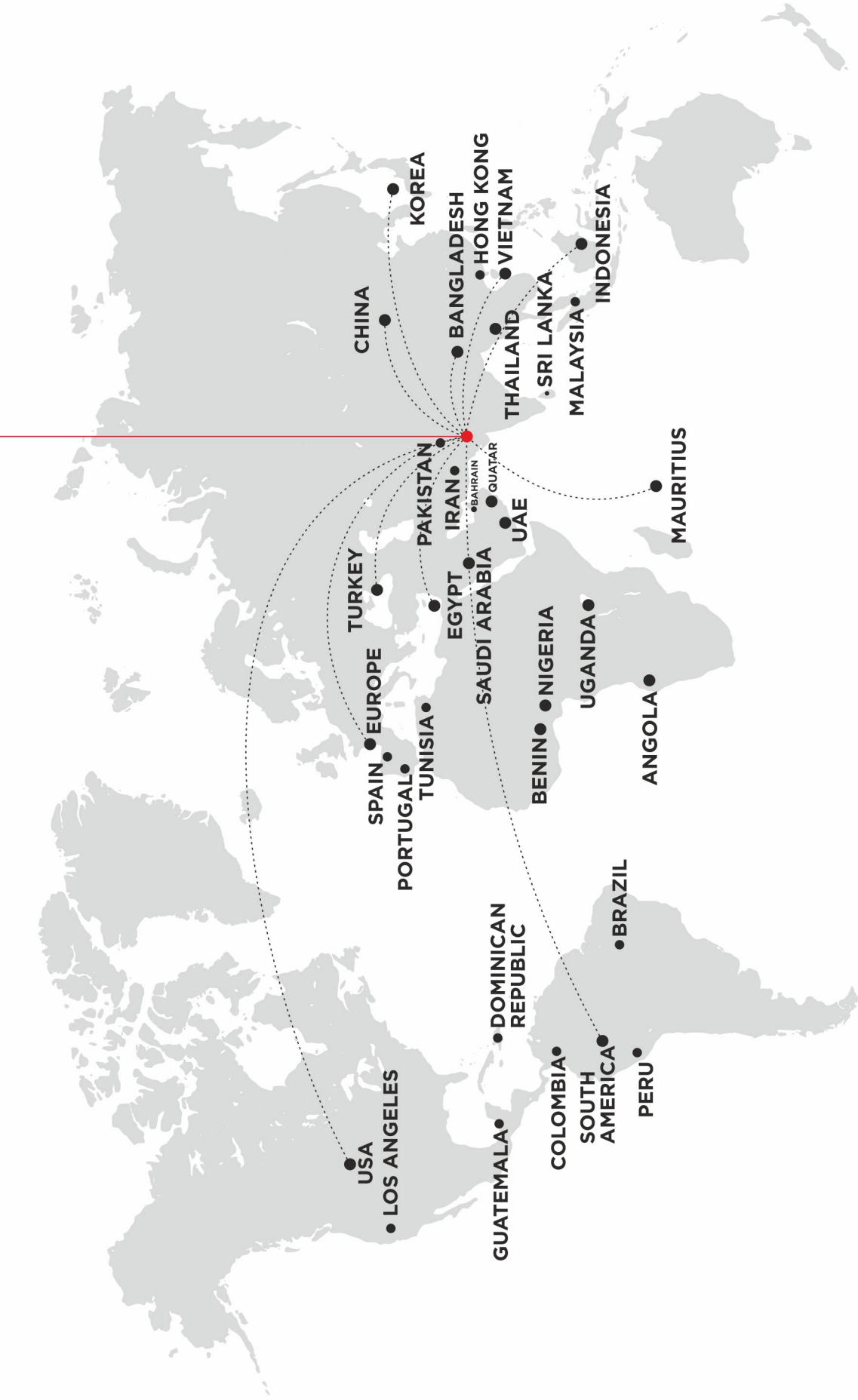
We offer 20s to 40s compact along with 40/2 Elli twist & Lycra yarn

80% OF POWER
FROM GREEN ENERGY

| CERTIFICATIONS & BRANDS

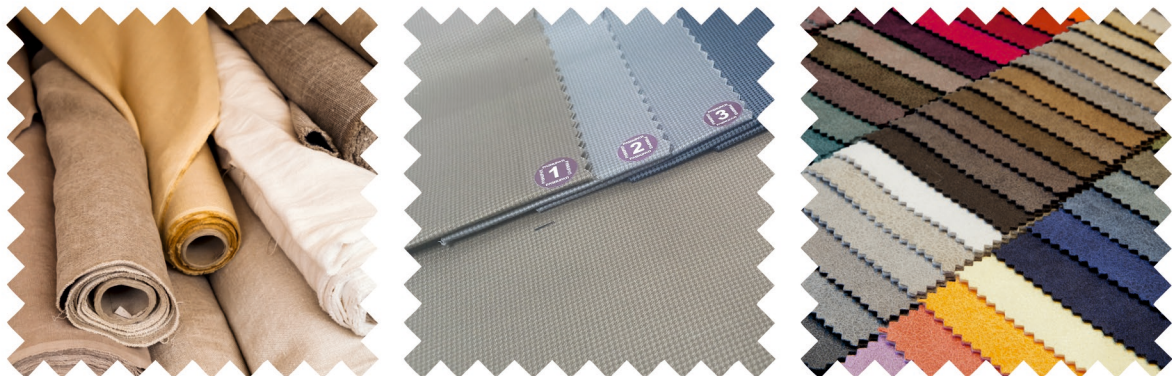


PASHUPATI
GROWTH WITH VISION



OUR PRESENCE

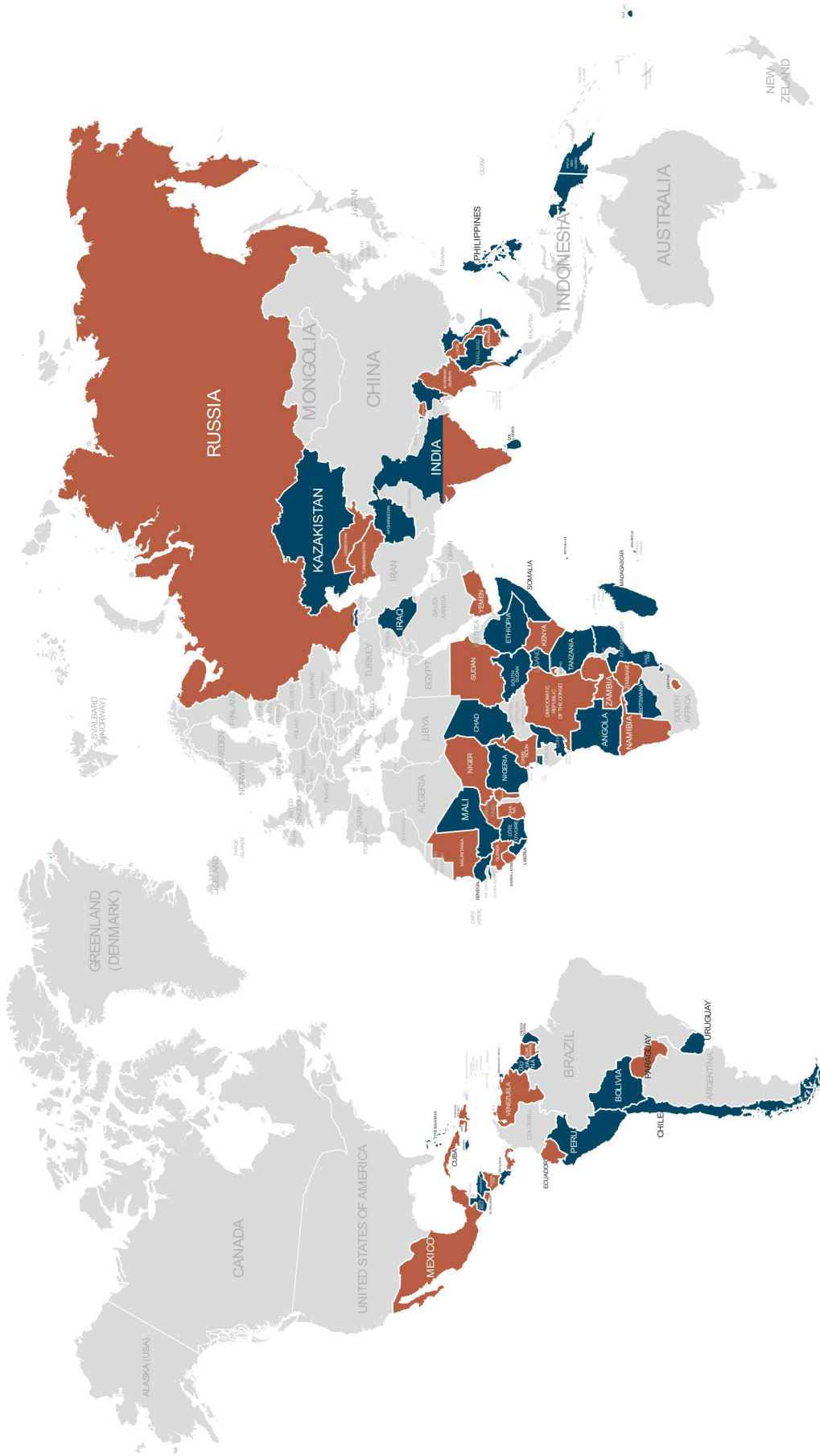
| FINISH FABRIC



With having integrated setup of 48 e-shed air-jet looms. We are equipped of producing 16 shaft dobby designs. Our looms are backed by preparatory section having in house sizing and warping both direct and sectional. This helps us to design and deliver multi design stripes checks etc. We are focused to cater institutional market worldwide. Our manufacturing speed and efficiency enables us to produce uniform fabric in pv /polyester/ poly wool and cotton suiting and shirting in all sort of blends and high construction. When it comes to fashion field, Pashupati is committed to deliver the quality products in plains, twills, dobbies etc with all kind of possible value additions.

| CERTIFICATIONS & BRANDS





Worldwide Presence



UNIZA is a venture of Pashupati Group, through which they have forayed into the Pharmaceutical industry. The Founder of Pashupati Group, MR. SAURIN PARIKH has collaborated with highly experienced team- MR. SHIRISH BELAPURE, MR. SREEKANTH SESHADRI, MR.ASHISH SARKAR, MR. UJWAL DESAI and MR. BHUVAN SHAH to form Uniza. The founding members are highly experienced in the Indian Pharmaceutical arena with their experience ranging from 25 to 42 years and are from the areas of Manufacturing, Procurement and Material Resource Management, Contract Manufacturing and In Licensing, Domestic and International Sales and Marketing.



World class Facilities at Plant





AGRICULTURAL & NON-AGRICULTURAL WAREHOUSE

| FEATURES

- 3.5 lakh sq.ft. (40,000 MT) CC Flooring
- Rodent & Snake Proof Construction
- Fork Lift & Conveyor Belt Facility
- Refreshment Facility
- Labour Colony
- Signboard & Emergency Numbers
- Parking Area

| AMENITIES

- Weighbridge - 80 Tons Capacity
- 4 Lakh Liters Water Storage

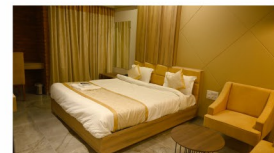
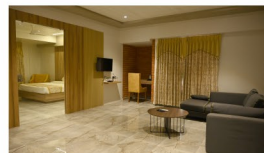
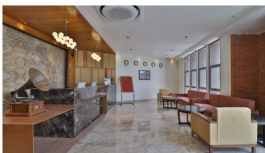
| SECURITY SPECIFICATIONS

- Fire Fighting System
- External Electrification
- Seismic Resistant Structure



HOSPITALITY

- 38 well furnished AC rooms
- Conference room
- Restaurants
- Banquet (upto 1000 guests capacity)



Overview

Pashupati Group, as a responsible corporate, is committed to building a sustainable future. The Environmental, Social, and Governance (ESG) roadmap of the organization aims at adopting sustainable business practices that ensure the long-term success of the organization along with the creation of a positive impact on the environment and society.

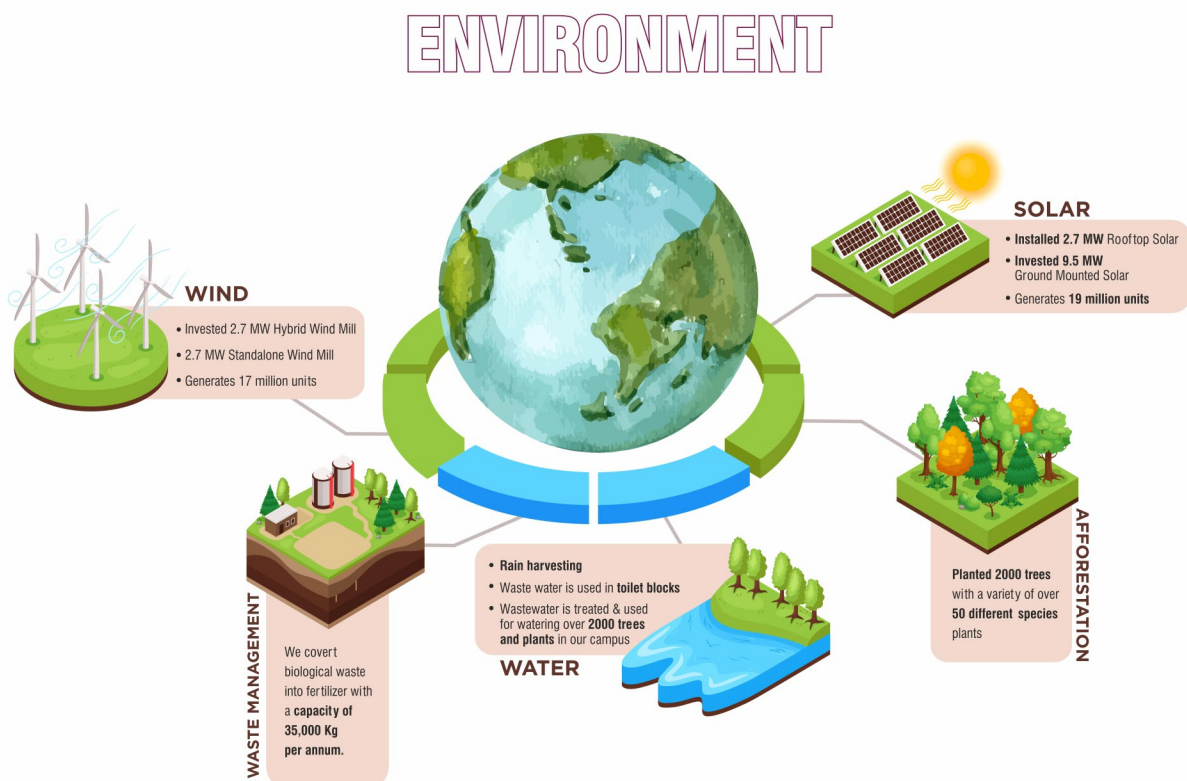
The group believes in achieving environmental sustainability along with proficiency in business. On the three aspects of ESG. When it comes to:

Environment: We embrace environmental conservation practices

Social: We solace with the community at large

Governance: We gracefully conform with norms, rules and procedures

And that's what makes us **ACE! an ALTRUISTICALLY COMMITTED ENTERPRISE**











Fulfilling our ESG responsibility, we at Pashupati believe that our duty toward the environment is our topmost priority and for the same, several conservation measures are undertaken at our organization. The group has set up solar and hybrid wind-solar projects to produce over 36 million green units and reduce GHG emissions.

We are committed to preserving and enriching our environment by complying with applicable environmental regulations and implementing appropriate technologies to minimize pollution.

SOCIAL

Building a Better Tomorrow with our Commitment to Social Welfare

 <p>COMMUNITY OUTREACH</p> <p>The group works devotedly for the welfare of the people of nearby rural areas</p>	 <p>AYUSH</p> <p>We under take cancer awareness initiatives through our CSR arm Pashupati Healthcare Foundation</p>	 <p>NUTRITION</p> <p>We provide food to over 120 employees everyday at no cost</p>	 <p>SAFETY</p> <p>Worker safety and welfare are of utmost importance to us</p>
 <p>SUPPORTING OUR EMPLOYEES</p> <p>We provide financial assistance for education for employee's children</p>	 <p>EDUCATION</p> <p>Our worker's children are provided educational facilities & snacks within the campus & a well established study area</p>	 <p>COMMUNITY UPRISING</p> <p>Provide scholarship to students of Kadi taluka (130 villages) who lost their fathers due to Covid-19 till High School Graduation</p>	 <p>ANIMAL WELFARE</p> <p>We believe in protecting all the species of birds & animals by providing them with water and food grains</p>

The Group regularly undertakes social welfare and empowerment initiatives by way of community outreach programs, cancer awareness initiatives, and areas of education and healthcare, employee welfare forms a prime area of focus as employees are the real asset of the company, and importance is laid upon employee safety and nutrition. The group also focuses on Animal welfare programs that provide nutrition and healthcare for animals.

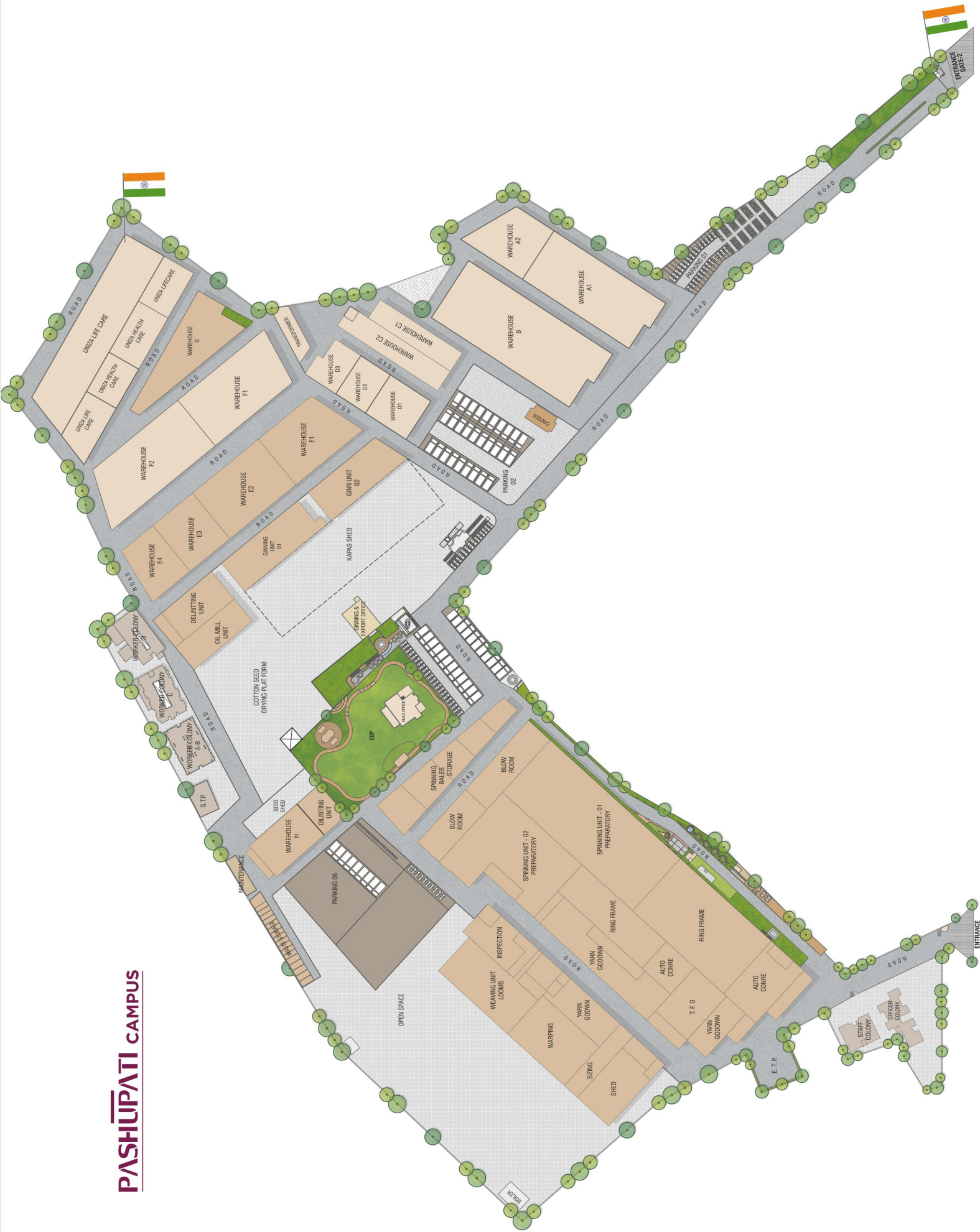
GOVERNANCE

For any organization to succeed, the highest standards of corporate governance in the conduct of the business need to be strictly adhered to, to enable transparent, ethical and responsible governance.

 <p>NOTHING ABOVE THE LAW</p> <p>We believe in doing business ethically by complying with all the statutory as well as constitutional laws of the country</p>	 <p>MANAGING FINANCES</p> <p>We strive to grow the amount of operating profit every year from our core businesses</p>	 <p>MOVING WITH THE TIMES</p> <p>We live in a digital era and it is extremely essential for any company to function as per the trend</p>	 <p>AN ETHICAL WAY OF FUNCTIONING</p> <p>We are committed to acting fairly, wisely, professionally and with integrity in our dealings</p>
---	---	---	---

Pashupati Group strives to strictly adhere to the highest standards of corporate governance in the conduct of the business to enable transparent, ethical, and responsible governance thus ensuring stakeholder accountability and wealth creation.

PASHUPATI CAMPUS



A glimpse of our Proposed Corporate House



www.pashupatigroup.in

PASHUPATI GROUP

O. D-707, GANESH MERIDIAN, OPP. GUJARAT HIGH COURT, S.G. HIGHWAY, AHMEDABAD-380060.

M.: +91.70 69 69 61 61 , **E.:** info@pashupatigroup.in, **W.:** www.pashupatigroup.in, www.unizagroup.com

F. KADI-DETROJ ROAD, AT: BALASAR, Ta.: KADI-384440. GUJARAT, INDIA
